

RVi

RU



RVi-IPN16/8-PRO





	RVi-IPN16/8-PRO
	.264
	16
	1 HDMI, 1 VGA, 1 BNC
()	1920×1080, 1280×1024, 1280×720, 1024×768, 800×600
/	1 (BNC) / 1 (BNC)
	G.711A
\	16/6
	75 10
()	5MP(2560x1920) / 3MP(2048x1536) / 1080P(1920x1080) / 720P(1280x720) / D1 (704.576/704x480)
	400 / (1080p), 400 / (720p)
/	, , , 30 / 300
HDD	SATA3 4
HDD	8 HDD SATA+4 HDD eSATA
USB	4 . (2)
RS485	PTZ
RS232	, , ,
	32 SATA + 16 eSATA
	, / (,),
	1 Gbit Ethernet
	HTTP, IPv4/IPv6, TCP/IP, UPNP, RTSP, UDP, SMTP, NTP, DHCP, DNS, PPPOE, DDNS, FTP, IP
	web- (IE, Google chrome, Firefox Mozilla,Opera)
C	RVi-PSS Windows XP Windows 7, MAC OS.
	: S Symbian, S Windows mobile, S Android, S Blackberry, i S.
	IP-
	RVi
	20
	/
	22 18 , 6
	-10...+55 °C
	100-240 AC, 40 HDD
	440x460x89 ()
	6 HDD

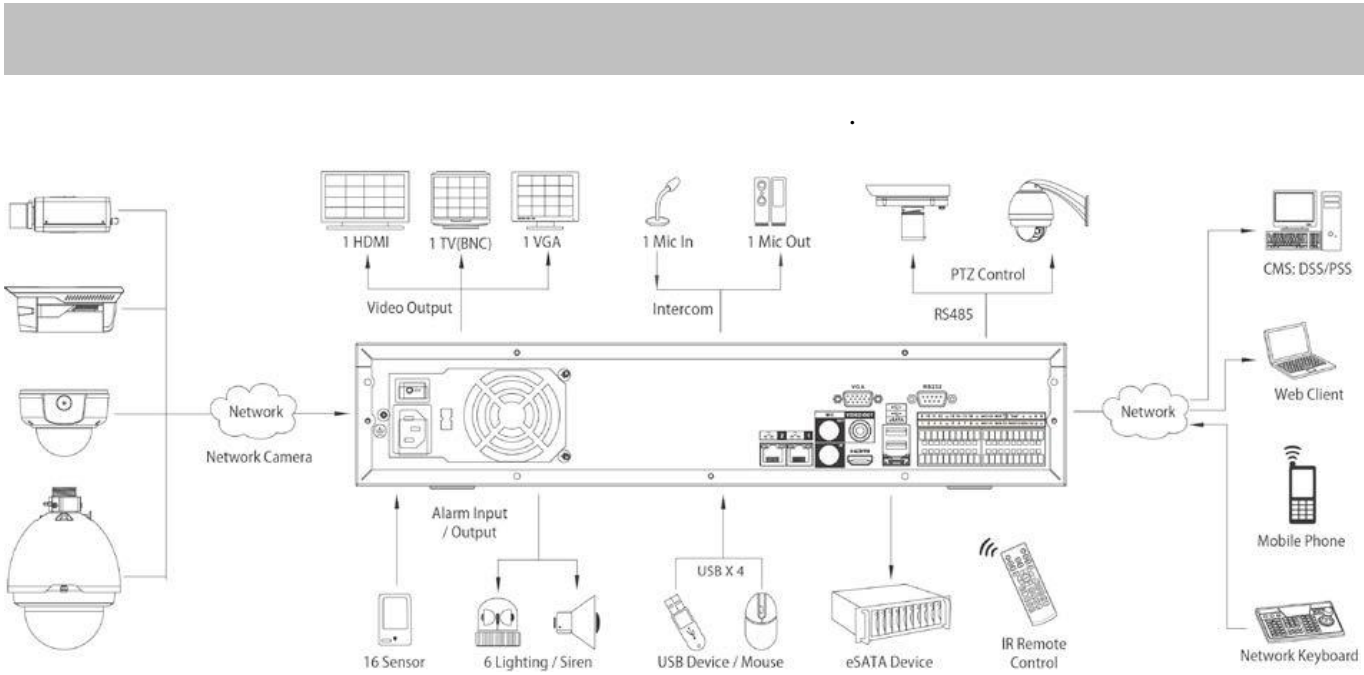
- SATA 1 .
- USB 8 .
- CD (1 .
- 19" 1 .
- 1 .



1.

1

1		.
2		(/) .
3		.
4	0-9	.
5		USB
6	REC	
7	Fn	
8	ESC	



HDD

SATA

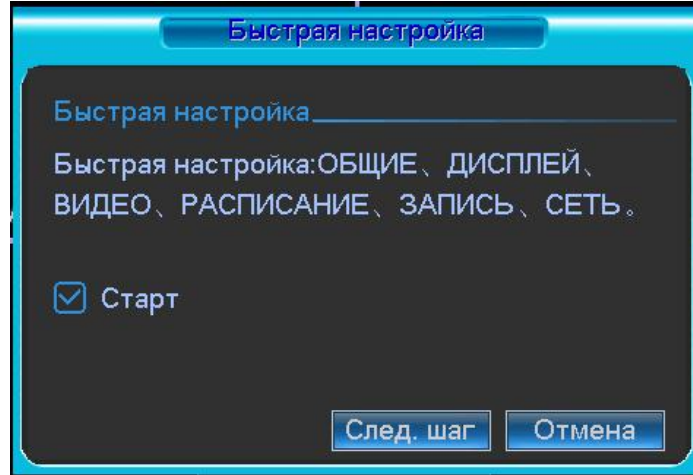
HDD

HDD.

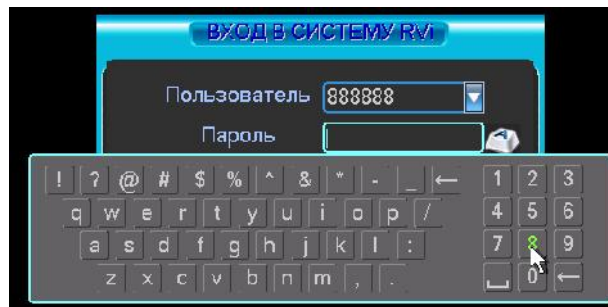


HDD

SATA



Enter



- : admin. : admin. (,)
- : 888888. : 888888. (,)
- : default. : default (,)

USB-



().

:

WEB-

web- NVR
 ping ***.***.***.***(* IP NVR)
 TTL 255.
 IE NVR.
 : IP 192.168.1.108.
 http://192.168.1.108 Internet Explorer.

« ».

ActiveX,



»,

« ».

«

».

IP

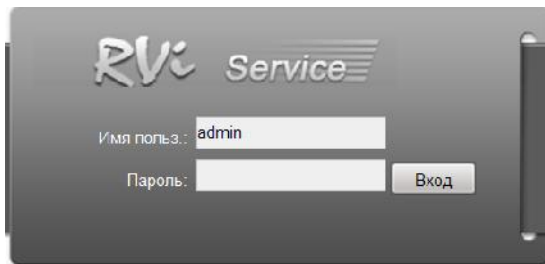
«
DVR.

WEB

admin

admin.

« ».



WEB

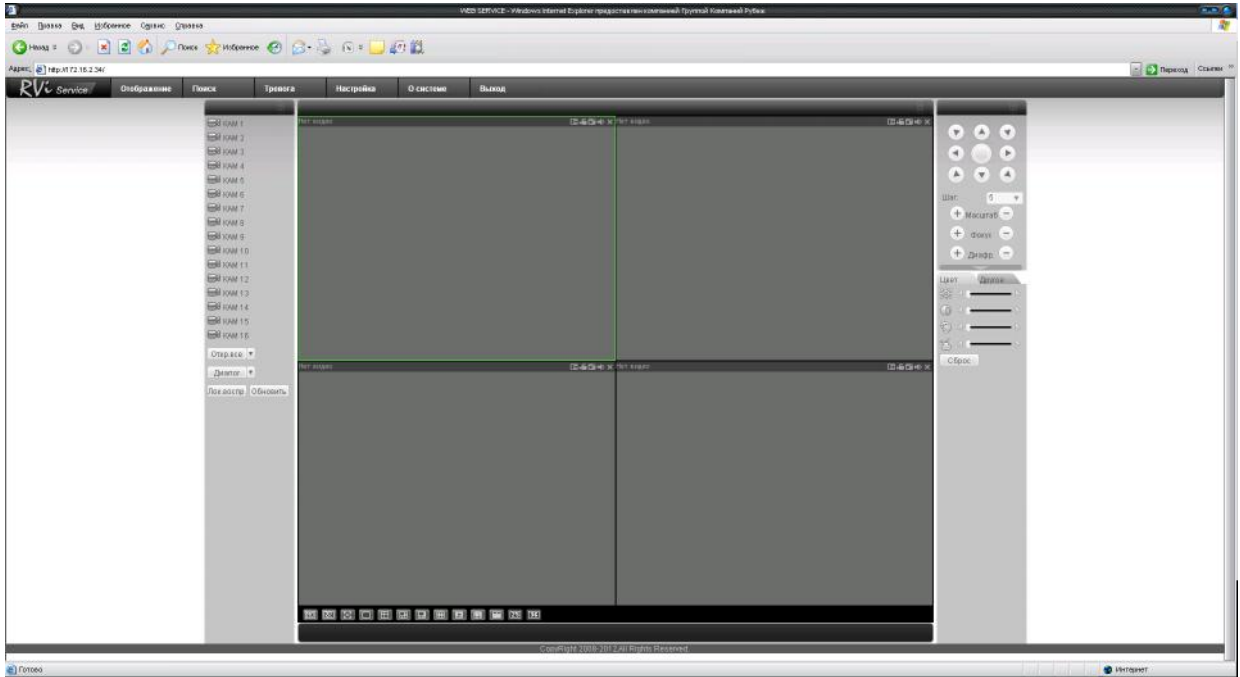
4

:



WEB

:



:

CD

<http://www.rvi-cctv.ru/>



(, . .) ,

69. 5 15150-

NVR 1 15150-69.

- , - 36



; ; ;

- .

:

Web

Four horizontal lines for input

:

BY

RVi- IPN16/8-PRO







	RVi-IPN16/8-PRO
	.264
	16
	1 HDMI, 1 VGA, 1 BNC
()	1920×1080, 1280×1024, 1280×720, 1024×768, 800×600
/	1 (BNC) / 1 (BNC)
	G.711u
	75 10
()	5MP(2560x1920) / 3MP(2048x1536) / 1080P(1920x1080) / 720P(1280x720) / D1 (704.576/704x480)
	400 / (1080p), 400 / (720p)
	, , ,
/	30 / 300
HDD	SATA3 4
HDD	8 HDD SATA+4 HDD eSATA
USB	4 (2)
RS485	PTZ
RS232	
,	32 SATA + 16 eSATA
	, / (,),
	1 Gbit Ethernet
	HTTP, IPv4/IPv6, TCP/IP, UPNP, RTSP, UDP, SMTP, NTP, DHCP, DNS, PPPOE, DDNS, FTP, IP i e
	web- (IE, Google chrome, Firefox Mozilla,Opera)
C	RVi PSS Windows XP Windows 7, MAC OS.
	: S Symbian, S Windows mobile, S Android, S Blackberry, i S.
	20
	/
	22 18 , 6
	-10...+55 °C
	100-240 AC, 40 HDD
	440x460x89 ()
	6 HDD

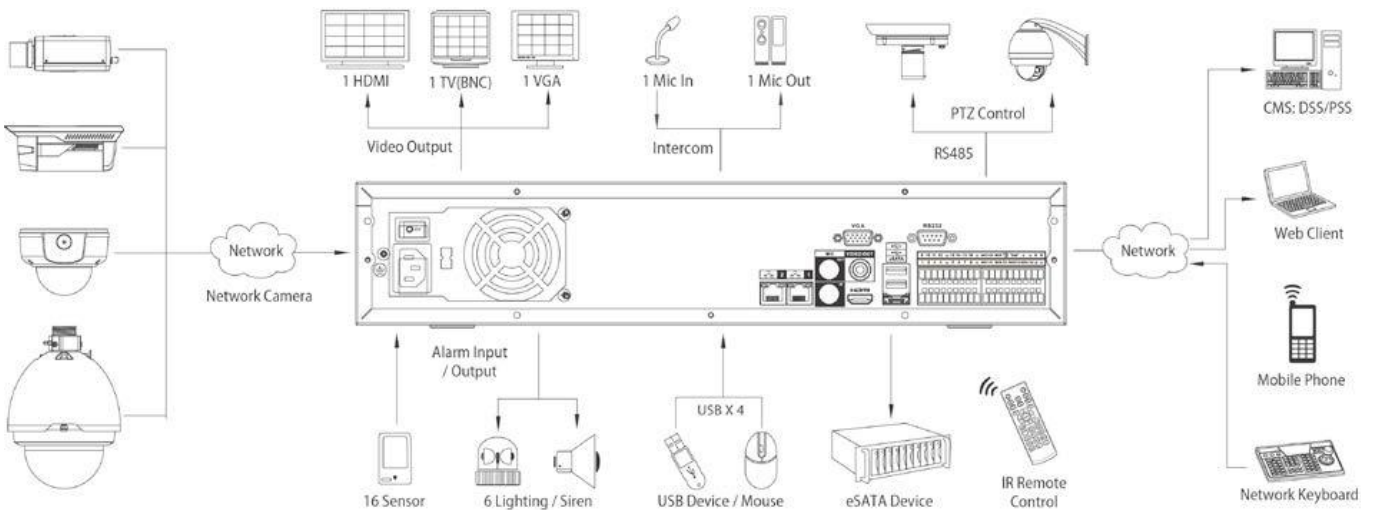
: , ,
 SATA 1 .
 USB 8 .
 1 .
 CD (1 .
 1 .
 19 " ,) 1 .
 1 .



1.

1

1		.
2		(/) .
3		.
4	0-9	.
5		USB
6	REC	
7	Fn	
8	ESC	



HDD

SATA

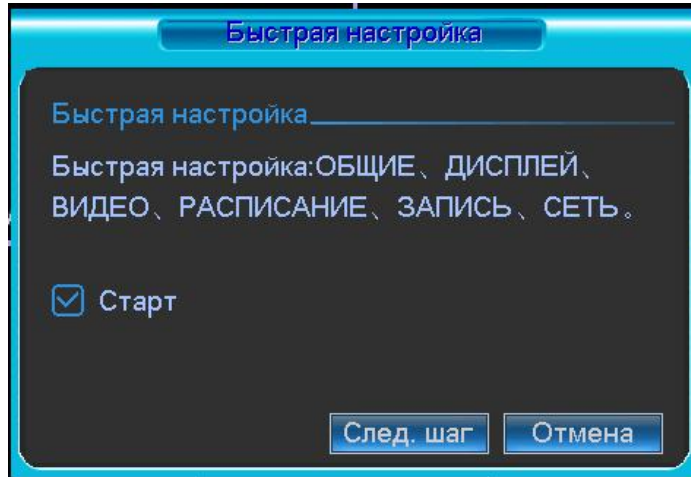
HDD

HDD.



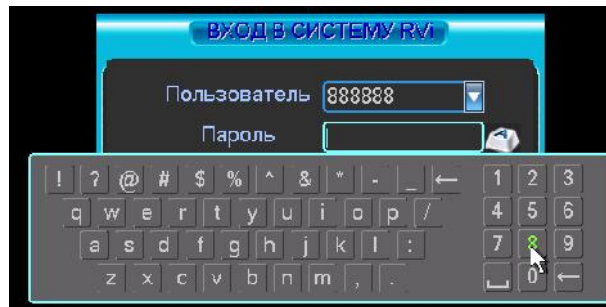
HDD

SATA



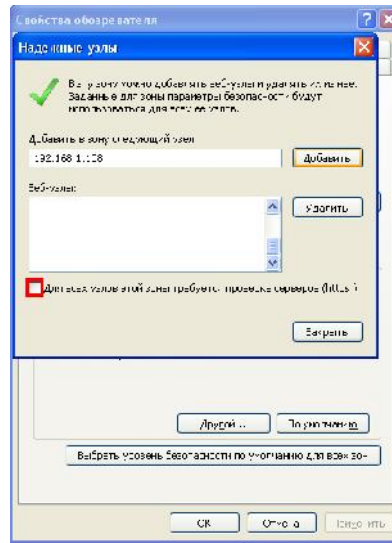
DVR?

Enter



(: 888888. : 888888. (: admin. : admin.)
 : default. : default ()
)
 USB-
 ()

WEB-DVR
 ping ***.***.***.***(* IP
 TTL, ,
 255.
 IE , IP
 192.168.1.108, http://192.168.1.108
 " " Internet Explorer.
 " " webrec.cab
 ActiveX,



_____ :

_____ :

192.168.1.108

(https:)

" " ,
 " " ,
 " " ,

" " , " " ,
 " " , IP " DVR. " ,
 WEB admin admin. " "



WEB

5

:

,

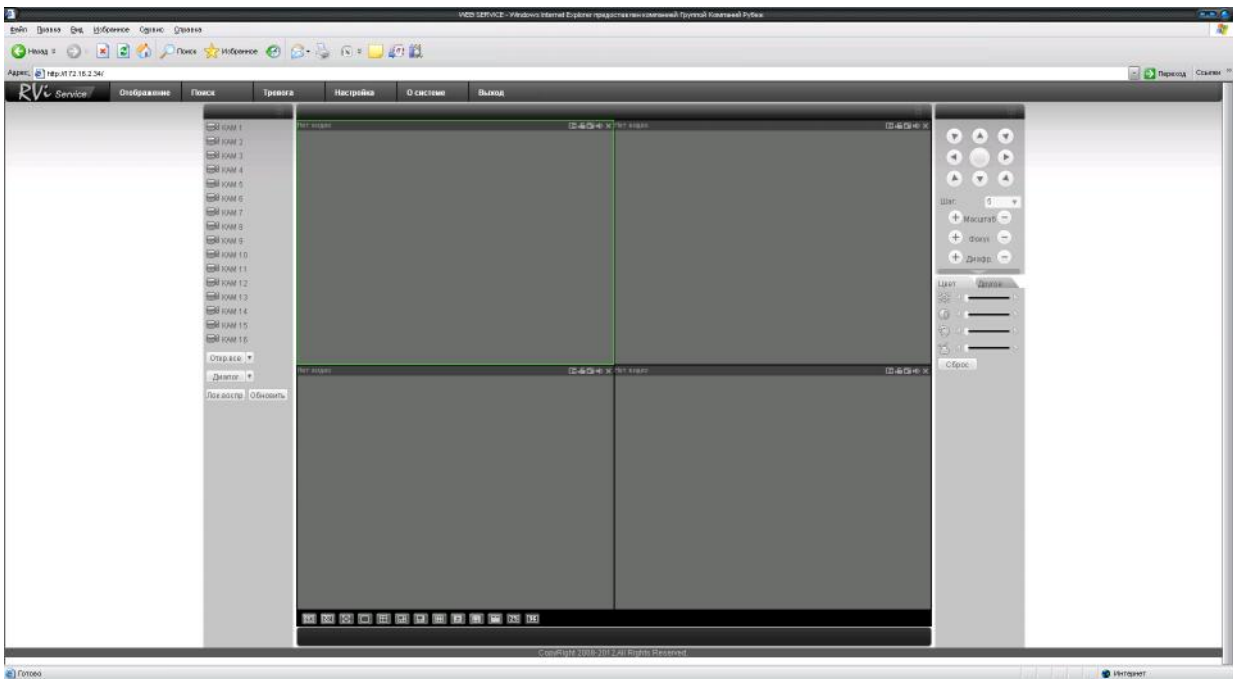
,

,



WEB

:



(, . .) , , , ,

1 DVR 15150-69.

5 15150-69.

- 36

WEB

:

KZ

RVi- IPN16/8-PRO







	RVi-IPN16/8-PRO
	.264
	16
	1HDMI, 1 VGA, 1 BNC
()	1920×1080, 1280×1024, 1280×720, 1024×768, 800×600
/	1 (BNC) / 1 (BNC)
	G.711u
	10 75
()	5MP(2560x1920) / 3MP(2048x1536) / 1080P(1920x1080) / 720P(1280x720) / D1 (704x576)
	400 / (1080p), 400 / (720p)
/	30 / 300
HDD	SATA3 4
HDD	8 HDD + eSaTa
USB	4 (2)
RS485	PTZ
RS232	
	32 SATA + 16 eSATA
	, / (,),
	1 Gbit Ethernet
	HTTP, IPv4/IPv6, TCP/IP, UPNP, RTSP, UDP, SMTP, NTP, DHCP, DNS, PPPOE, DDNS, FTP, IP
	web- (IE, Google chrome, Firefox Mozilla,Opera)
Windows XP	Windows 7, MAC OS RVi
	PSS
	: S Symbian, S Windows mobile, S Android, S Blackberry, i S.
	20
	/
	22 18 , 6
	-10...+55 °C
	100-240 AC, 40 , HDD
	440x460x89 ()
	6 , HDD

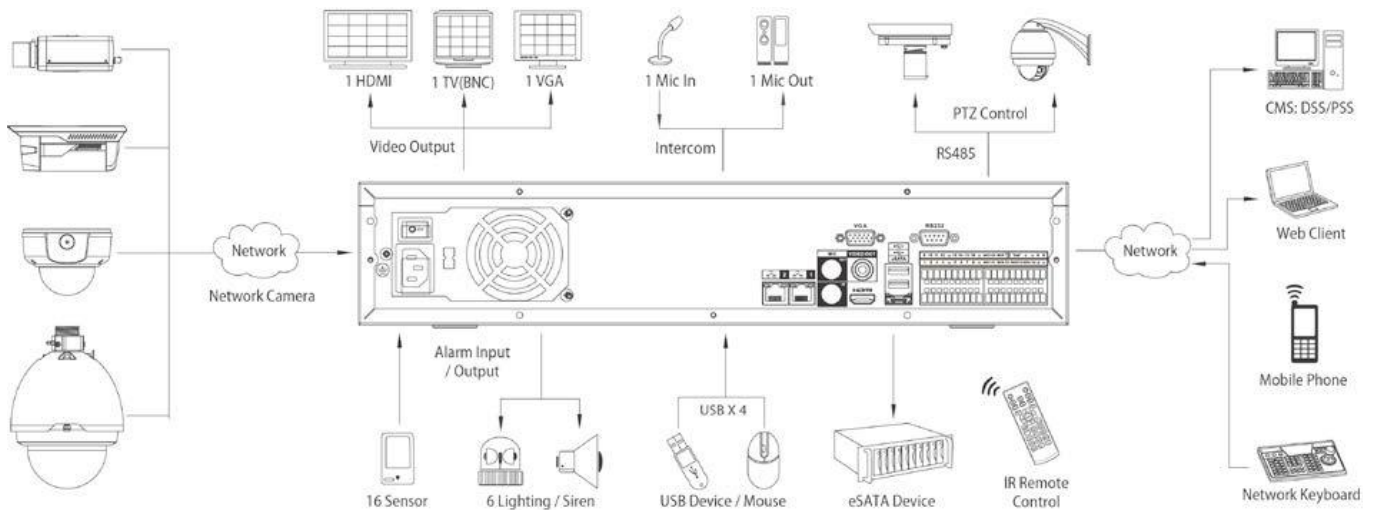
- - SATA
 - USB
 -
 - CD ()
 - 19"
- 1 .
 - 8 .
 - 1 .
 - 1 .
 - 1 .
 - 1 .



1

1

1		
2		(/)
3		
4	0-9	
5		USB
6	REC	
7	Fn	
8	ESC	



HDD

SATA

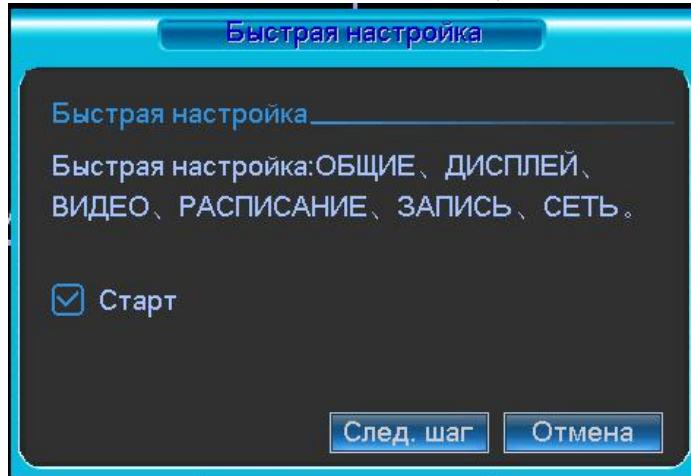
HDD

HDD



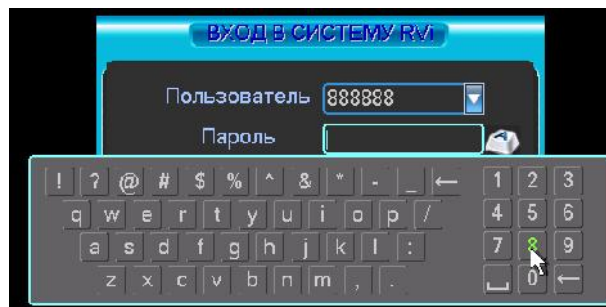
HDD

, SATA



NVR?	NVR ?

Enter



...	

- : admin. : admin. (,)
 - : 888888. : 888888. (,)
 - : default. : default ()
- USB-

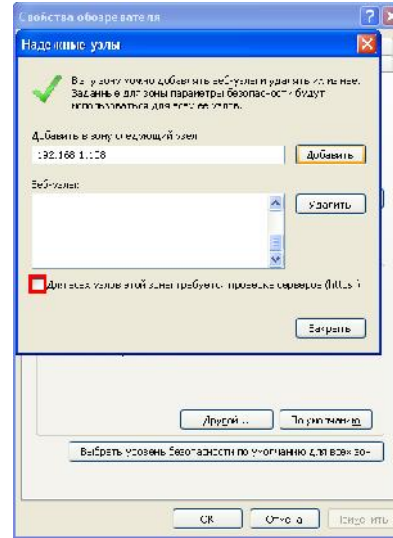
()

.

;

WEB-

DVR Web-NVR
 ping ***.***.***.*** (* IP - NVR)
 TTL 255
 IE , - NVR
 : IP
Internet Explorer - http://192.168.1.108 **192.168.1.108.**
 « »
ActiveX

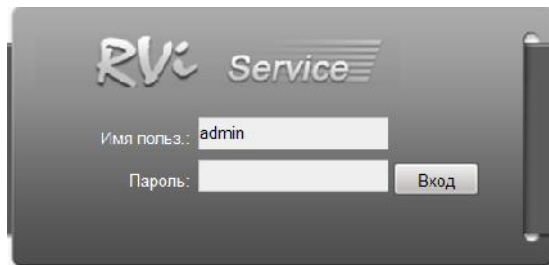


«RVi»	

(https:)	(https:)
...	...

DVR , « IP - . « »

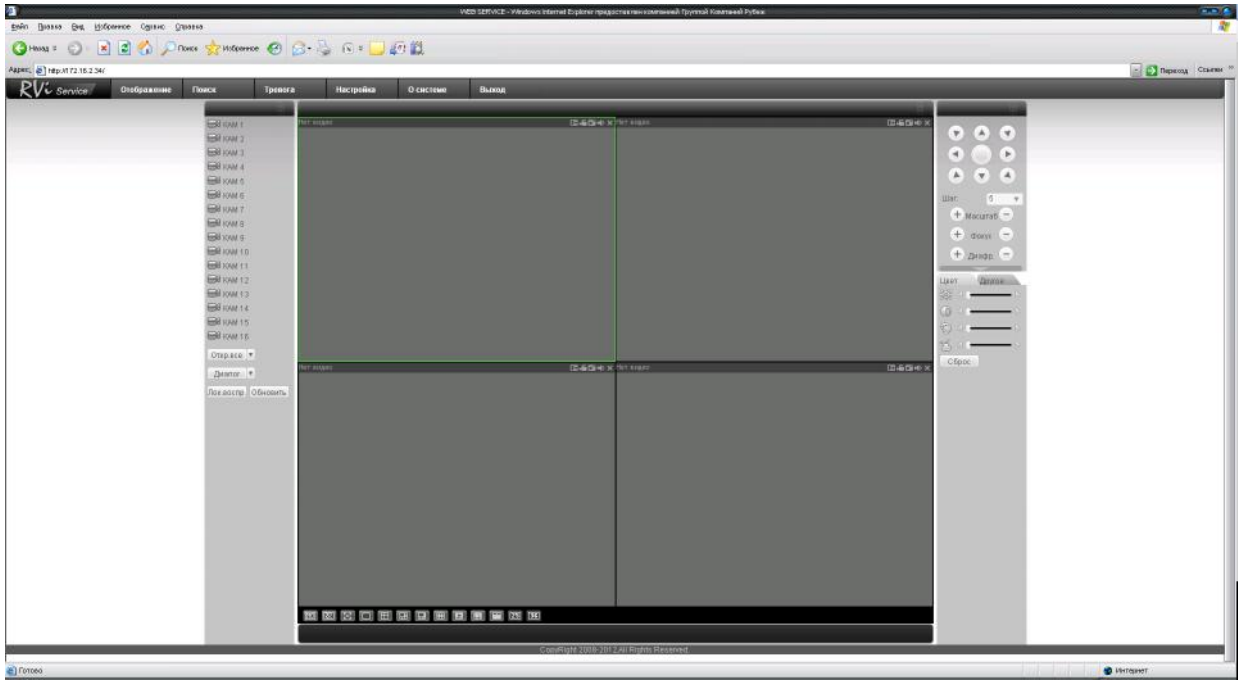
WEB admin admin. « »



WEB 5 : , , ,



WEB





(,

,

. .) 15150-69 5

.

15150-69

1

NVR

. , ,

36 .

-

:



, ; , ; ;

:

Web

Four horizontal lines representing a form or signature area.

:
